

NOVEMBER 2008 £4.30

# THE WORLD OF INTERIORS

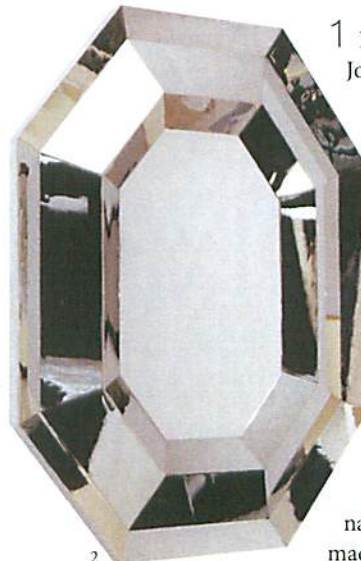


# antennae

What's in the air this month, edited by Nathalie Wilson



1



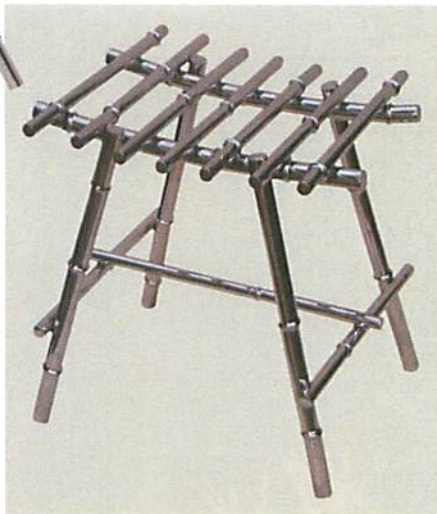
2

1 Lizzie Deshayes, Tim Butcher and David Jones cut their teeth designing for the likes of Osborne & Little and De Gournay before taking their own bite of the wallpaper market by founding Fromental. 'Amelie' (left; £270 per sq m) and 'Willow' (right; £315 per sq m), inspired by a handkerchief and a 1930s fashion plate respectively, are made using the cloisonné process to create an embossed-leather effect. Ring 020 8960 8899, or visit [fromental.co.uk](http://fromental.co.uk).



3

2 It doesn't take a Sherlock Holmes to work out what inspired Eric Allart's trio of monumental mirrors. The clue is in their name. 'Venise' (£11,900), shown here, handmade in France from nickel-plated brass, is a take on the decorative etched-glass mirrors that come from La Serenissima. Ring 00 33 1 42 61 17 50, or visit [ericallart.com](http://ericallart.com).



3 Pandas may shun the stainless-steel 'Bamboo' collection by Alex Davis, but those wild creatures of the interior-design world who have a taste for updated Chinese furniture will be salivating. Pictured, from left, are 'Bench' (£357 approx), 'Dining Table' (£715 approx) and 'Stool' (£215 approx). Ring 00 91 112 6495 4473, or visit [alexdavisdsgn.com](http://alexdavisdsgn.com).



4

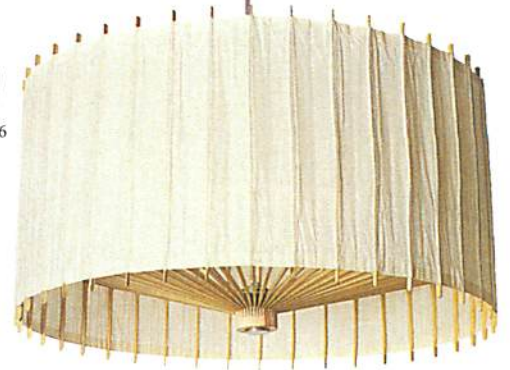
4 With the reversible 'Harlequin' quilt (£115 approx), available in three jewel-like colours, Hay is striding towards its goal of 'encouraging Danish design's return to the innovative greatness of the 1950s and 1960s'. Ring 00 45 99 424410, or visit [hay.dk](http://hay.dk).



5

5 Under the creative direction of Aldo Cibic, co-founder of the 1980s Memphis design movement, Paola C aims 'to offer a youthful yet refined interpretation of tableware'. Shown here: 'Masai' aluminium trays (from £66 approx each) by Cibic himself and silver-plated 'Curl' salad servers (£122 approx) by Gordon Guillaumier. Ring 00 39 02 862409, or visit [paolac.com](http://paolac.com).

6 When Kotaro Nishibori, president of Wagasi - purveyor of Japanese umbrellas to the imperial family - met lighting designer Hiroshi Nagane



they had what you might call a light-bulb moment: between them they could create ingenious shades that collapse like brollies (see above). Shown right is the 'Kotori' pendant (from £157 approx), available in white or black Japanese paper and various patterned fabrics. Ring 00 81 75 441 6644, or visit [wagasa.com](http://wagasa.com).

7 Stefanie Hering isn't burdened by tradition – her porcelain factory is only 15 years old – and so feels able to push the boundaries of contemporary ceramics. Certainly, the walls of (from top) the teapot (£242 approx), carafe (from £69 approx) and vinegar flask (£133 approx) from her 'Granat' service are as thin as can be without rendering them useless, while the simple forms and decoration will appeal to those who like their china cutting-edge. Ring 00 49 30 80 60 40 05, or visit [hering-berlin.de](http://hering-berlin.de).



8 Like most of us, Anna Smith loves to travel and shop. While our excursions to the emporia of foreign parts generate memories and an empty purse, hers inspired the establishment of Also Home, a mail-order firm with an Oriental bent. Shown here are a hand-embroidered 'Sapporo Boudoir' cushion (£30) and hand-quilted reversible 'Amara' bedspread (£150). Ring 0844 870 0165, or visit [alsohome.com](http://alsohome.com).



9 The production of the 'Sugar Cube' cabinet (£4,350) left designers Knowles & Christou feeling less than sweet at times; its delicate split-pea-coloured glass cushion doors were a major technical challenge. Ring 020 7352 7000, or visit [knowles-christou.com](http://knowles-christou.com).

10 Bespoke furniture maker Fassbinder & English has mined its archives to create a wallpaper collection that includes five 'Leaf Metals' (from £208 approx for 56cm x 3m). Shown here, from left, are 'Hubble' and 'Phospor' and an example of an aged mirror (£278 per sq m), all manufactured entirely by hand in their Dublin-based studios. Ring 00 353 1 661 7678, or visit [fassbinderenglish.com](http://fassbinderenglish.com). ▷

